



iNWS & NWSChat



- Rhett Milne – NWS Reno



http://inws.wrh.noaa.gov/

Customize Links Free Hotmail Windows Marketplace Windows Media Windows

Home My Alerts News FAQ About

Login Register



iNWS - Interactive NWS

National Weather Service Mobile Decision Support Services (MDSS)

iNWS MOBILE ALERTING

Receive customized text message and e-mail alerts for National Weather Service products that you care about.



Welcome.

InteractiveNWS (iNWS) is the home of new mobile and desktop innovations of the National Weather Service. This application suite allows NWS partners to receive National Weather Service products in new and innovative ways, such as text messaging and mobile-enabled webpages. iNWS strives to fulfill our mission of protecting life and property by using new technology to reach out to our customers.

Recent News.

- [Text Message Alerts Unlocked for All iNWS Users](#)
- [New Version of the iNWS Web Page Released](#)
- [All Advisories, Watches and Warnings Restored to iNWS Text Message Alerts](#)
- [iNWS Text Message Alerts Limited to Warning Products](#)
- [Important Change to iNWS User Profiles](#)

iNWS is an experimental service intended for NWS core partners, including emergency managers, community leaders and other government agencies only. You are encouraged to complete a [short survey](#) on iNWS. See the iNWS [Service Description Document](#) for more information.

National Oceanic and Atmospheric Administration - National Weather Service - iNWS Version 4 - Switch to Mobile Version
[Privacy Policy](#) | [Terms of Service](#) | [FOIA](#) | [Information Quality](#) | [Disclaimer](#) | [Glossary](#) | [Texting While Driving](#)



Interactive NWS Registration

User Information

First Name:

Last Name:

Organization:

Job Title:

City, State:

Account Credentials

E-Mail:

Confirm E-Mail:

Password:

Confirm Password:

PLEASE NOTE:
iNWS is intended for members of community emergency planning and response management (i.e. emergency managers, law enforcement, fire and emergency responders, transportation and safety managers, public officials), Skywarn Net Control operators, government partners of NWS offices, and members of the electronic media. Do **not** register if you do not fit this description.

Please note the following federal policy and executive order issued about texting while driving [here](#).

We collect personal information such as your e-mail and cell phone number in order to validate your account and to provide you with customized alerts that you select. If you have concerns about how and why we collect this data please read the [Privacy Policy](#) or [Contact Us](#) if you want more information.

See official NWS product description [here](#).

By clicking 'Submit Registration Request' you are voluntarily providing this information and agreeing to the [Terms of Service](#) and our [Privacy Policy](#).
Your registration request will be reviewed and you will receive an email notifying you of the approval or denial of your registration request within 1-2 business days.

Submit Registration Request



Interactive NWS My Alerts

- Alerts Home
- Account Settings
- Logout

iNWS Alert Areas

Add New Alert Area

Reno-Tahoe

Reno

ndot test with no Pyr

Hydrology Alert Points

Add New Hydro Point



Reno-Tahoe

Created on September 9 2009 4:44 PM UTC

Active Alert Types:

- Winter Weather
- Hydrology
- Non-Precipitation
- Civil Emergency

Settings

- [Edit Alert Types](#)
- [Delete Alert Area](#)

Recent Alerts for Reno-Tahoe

Correction for Reno-Tahoe

Lake Wind Advisory valid from Jul 4 1:09 PM to 5:00 PM PDT [View More](#)
Sent to *SMS and E-Mail* at Jul 4 1:13 PM PDT

New event for Reno-Tahoe

Lake Wind Advisory valid from Jul 4 1:06 PM to 5:00 PM PDT [View More](#)
Sent to *SMS and E-Mail* at Jul 4 1:06 PM PDT



Interactive NWS My Alerts

- Alerts Home
- Account Settings
- Logout

iNWS Alert Areas

[Add New Alert Area](#)

[Reno-Tahoe](#)

[Reno](#)

[ndot test with no Pyr](#)

Hydrology Alert Points

[Add New Hydro Point](#)

Add New Alert Area or Hydrology Point

Select the type and format of alert area you would like to create.

- Create an alert point by city, zip code, or landmark.
- Create an alert area by county.
- Create an alert point or alert area by custom drawing.

Next

iNWS is an experimental service intended for NWS core partners, including emergency managers, community leaders and other government agencies only. You are encouraged to complete a [short survey](#) on iNWS. See the iNWS [Service Description Document](#) for more information.



Interactive NWS My Alerts

- Alerts Home
- Account Settings
- Logout

iNWS Alert Areas

Add New Alert Area

Reno-Tahoe

Reno

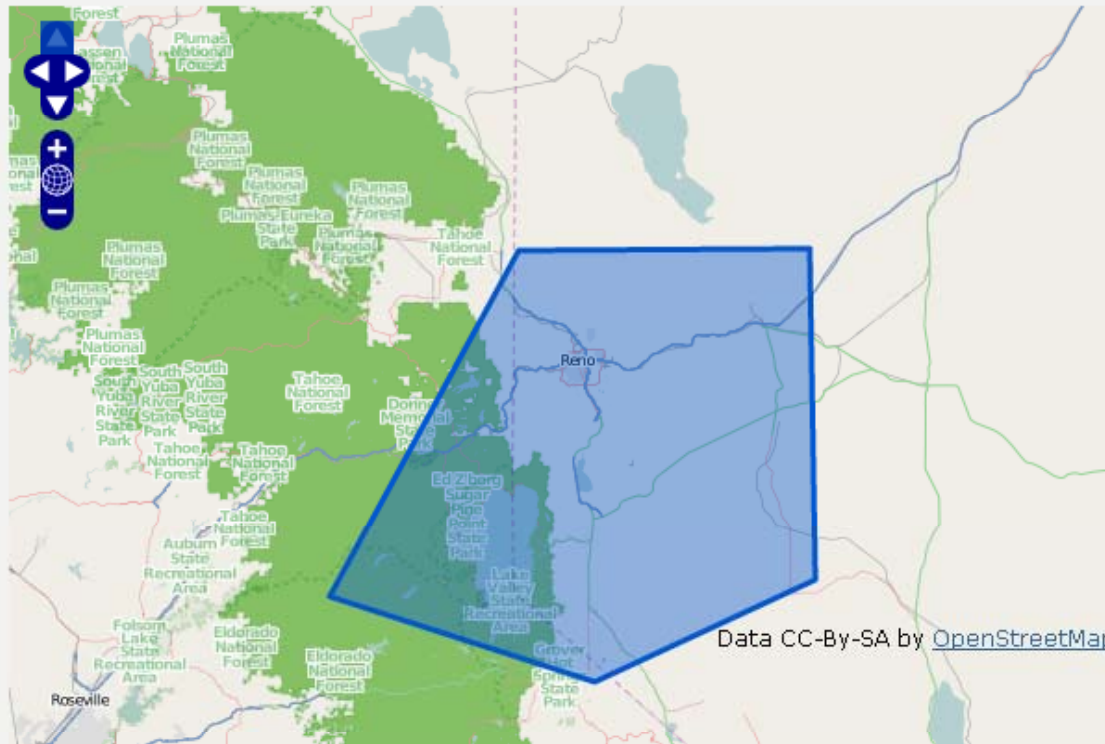
ndot test with no Pyr

Hydrology Alert Points

Add New Hydro Point

Create an alert point or alert area by custom drawing.

Using the map, draw a point, line or polygon over the area you wish to receive alerts for.



- Navigate
- Draw Point
- Draw Line
- Draw Polygon

For 'Draw Point' - Single click to draw a point.

For 'Draw Line' and 'Draw Polygon' - Single click to add points, double click to end drawing.

Next

Back

iNWS is an experimental service intended for NWS core partners, including emergency managers, community leaders and other government agencies only. You are encouraged to complete a [short survey](#) on iNWS. See the iNWS [Service Description Document](#) for more information.

180_Coalition Alert Area Created!



Interactive NWS My Alerts

- [Alerts Home](#)
- [Account Settings](#)
- [Logout](#)

iNWS Alert Areas

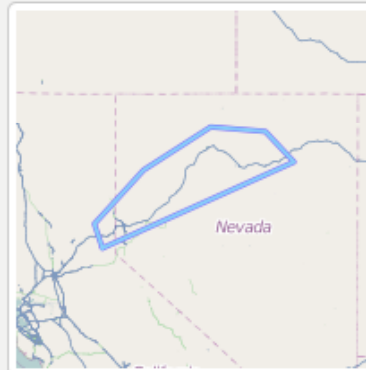
- [+ Add New Alert Area](#)
- [Reno-Tahoe](#)
- [Reno](#)
- [ndot test with no Pyr](#)

180_Coalition

[EM Example](#)

Hydrology Alert Points

- [+ Add New Hydro Point](#)
- [Truckee River at Vista \(VISN2\)](#)



180_Coalition

Created on October 27 2010 3:42 AM UTC

Active Alert Types:

- Severe Weather
- Winter Weather
- Non-Precipitation
- Civil Emergency

Settings

- [Edit Alert Types](#)
- [Delete Alert Area](#)

Recent Alerts for 180_Coalition

No more alerts have been issued since May 3 2010.

iNWS is an experimental service intended for NWS core partners, including emergency managers, community leaders and other government agencies only. You are encouraged to complete a [short survey](#) on iNWS. See the iNWS [Service Description Document](#) for more information.



Interactive NWS My Alerts

- Alerts Home
- Account Settings
- Logout

iNWS Alert Areas

+ Add New Alert Area

Reno-Tahoe

Reno

ndot test with no Pyr

EM Example

Hydrology Alert Points

+ Add New Hydro Point

Set Alert Area Options

Select which alerts you would like to receive for your alert area and name your alert area. For examples of what products are in what categories see [FAQ](#).

To change location of alert area, delete and recreate a new one.

Feature Name:

- Alert Categories:
- Severe Weather
 - Winter Weather
 - Hydrology
 - Fire Weather
 - Marine Weather
 - Coastal Hazards
 - Tropical Weather
 - Aviation
 - Non-Precipitation
 - Civil Emergency
 - Other

Update Alert Area

iNWS is an experimental service intended for NWS core partners, including emergency managers, community leaders and other government agencies only. You are encouraged to complete a [short survey](#) on iNWS. See the iNWS [Service Description Document](#) for more information.



Interactive NWS Alert Settings

Alerts Home

Account Settings

Logout

iNWS Alert Areas

Add New Alert Area

Reno-Tahoe

Reno

ndot test with no Pyr

EM Example

Hydrology Alert Points

Add New Hydro Point

Email:

Cell Phone Number:

We support the following cell phone carriers:

AT&T/Cingular, Sprint/Nextel/Boost, T-Mobile, Verizon, Alltel, U.S. Cellular, Cellular One/Dobson, Virgin Mobile US, Cincinnati Bell, Midrivers, and Nemont/Sagebrush

Password: [Change Password](#)

Send alerts to email?

Send alerts to phone as text message?

No longer want to use iNWS?

iNWS is an experimental service intended for NWS core partners, including emergency managers, community leaders and other government agencies only. You are encouraged to complete a [short survey](#) on iNWS. See the iNWS [Service Description Document](#) for more information.



Interactive NWS Alert Information

[Alerts Home](#)

[Account Settings](#)

[Logout](#)

iNWS Alert Areas

[Add New Alert Area](#)

[Reno-Tahoe](#)

[Reno](#)

[ndot test with no Pyr](#)

[I80_Coalition](#)

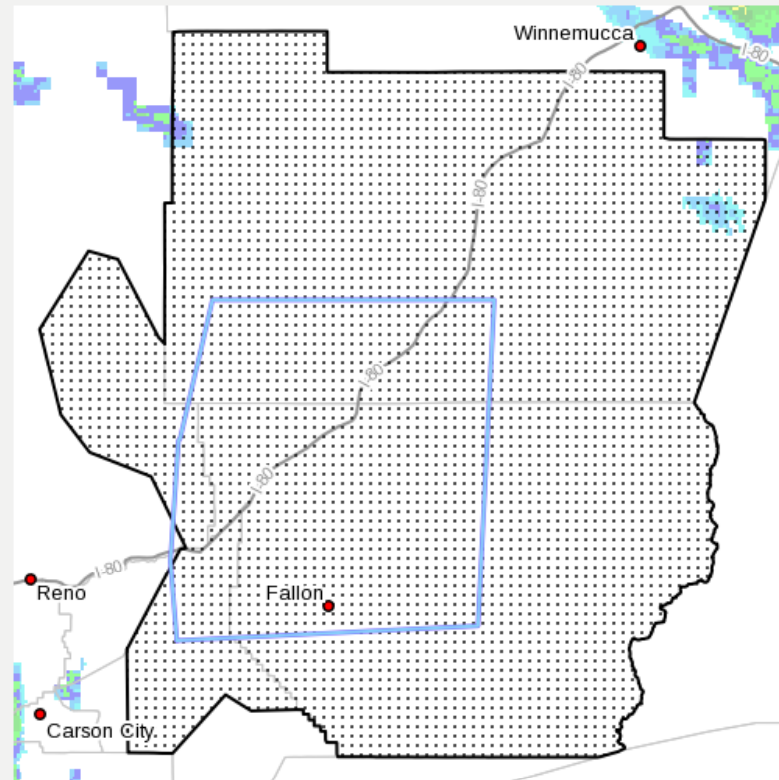
[EM Example](#)

Hydrology Alert Points

[Add New Hydro Point](#)

[Truckee River at Vista \(VISN2\)](#)

New Event for ndot test with no Pyr
High Wind Warning valid from Oct 24 8:00 AM to 11:00 PM PDT
Sent to SMS and E-Mail at Oct 23 10:48 AM PDT



Radar Time: Oct 24 2010 8:00 AM PDT



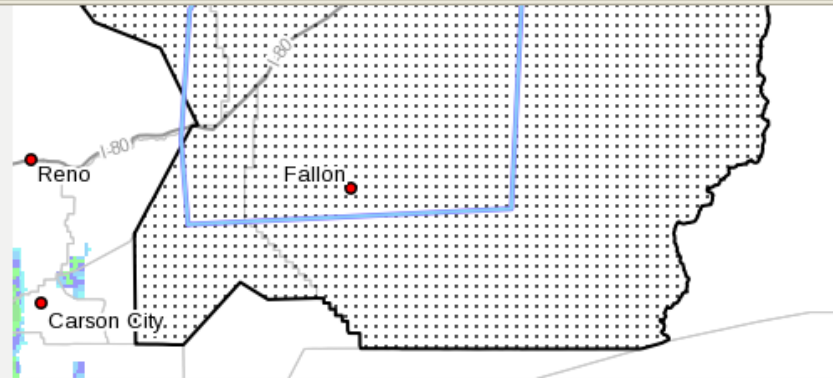
NVZ004-241200-
/O.NEW.KREV.HW.W.0005.101024T1500Z-101025T0600Z/
WESTERN NEVADA BASIN AND RANGE INCLUDING PYRAMID LAKE-
INCLUDING THE CITIES OF...FERNLEY...FALLON...LOVELOCK...
SILVER SPRINGS
1047 AM PDT SAT OCT 23 2010

...HIGH WIND WARNING IN EFFECT FROM 8 AM TO 11 PM PDT SUNDAY...

THE NATIONAL WEATHER SERVICE IN RENO HAS ISSUED A HIGH WIND
WARNING WHICH IS IN EFFECT FROM 8 AM TO 11 PM PDT SUNDAY



Truckee River at Vista (VISN2)



Radar Time: Oct 24 2010 8:00 AM PDT

NWS Alert User Alert Area

NVZ004-241200-
/O.NEW.KREV.HW.W.0005.101024T1500Z-101025T0600Z/
WESTERN NEVADA BASIN AND RANGE INCLUDING PYRAMID LAKE-
INCLUDING THE CITIES OF...FERNLEY...FALLON...LOVELOCK...
SILVER SPRINGS
1047 AM PDT SAT OCT 23 2010

...HIGH WIND WARNING IN EFFECT FROM 8 AM TO 11 PM PDT SUNDAY...

THE NATIONAL WEATHER SERVICE IN RENO HAS ISSUED A HIGH WIND WARNING...WHICH IS IN EFFECT FROM 8 AM TO 11 PM PDT SUNDAY.

- * TIMING: STRONG WINDS WILL AFFECT CHURCHILL AND PERSHING COUNTIES SUNDAY MORNING THROUGH SUNDAY EVENING.
- * WINDS: SOUTHWEST TO WEST WINDS OF 20 TO 35 MPH WITH GUSTS 50 TO 60 MPH WILL OCCUR. WINDS GUSTS UP TO 70 MPH MAY OCCUR IN WIND PRONE AREAS.
- * IMPACTS: STRONG WINDS WILL IMPACT TRAVEL ALONG HIGHWAYS 50...95 AND INTERSTATE 80. WINDS MAY DAMAGE TREES...FENCES AND CREATE AREAS OF BLOWING DUST WITH VISIBILITY BELOW 3 MILES AT TIMES. LOOSE OUTDOOR OBJECTS SUCH AS PATIO FURNITURE SHOULD BE SECURED OR BROUGHT INDOORS.

PRECAUTIONARY/PREPAREDNESS ACTIONS...

DAMAGE TO TREES...POWER LINES AND PROPERTY IS LIKELY WITH WINDS OF THIS MAGNITUDE. DRIVING WILL BECOME HAZARDOUS FOR HIGH PROFILE VEHICLES. USE EXTRA CAUTION AND REMAIN ALERT FOR SUDDEN GUSTS OR CROSS WINDS.

&&

iNWS is an experimental service intended for NWS core partners, including emergency managers, community leaders and other government agencies only. You are encouraged to complete a [short survey](#) on iNWS. See the iNWS [Service Description Document](#) for more information.



Interactive NWS My Alerts

- Alerts Home
- Account Settings
- Logout

iNWS Alert Areas

- Add New Alert Area
- Reno-Tahoe
- Reno
- ndot test with no Pyr
- EM Example

Hydrology Alert Points

- Add New Hydro Point

Set Hydro Point Options

Select which alerts you would like to receive for your hydro point.

Select a Point: Truckee River at Vista (VISN2)

- Alert Categories:
- Forecasted Flood Stage Change
 - Observed Flood Stage Change

Create Hydro Point

Back

iNWS is an experimental service intended for NWS core partners, including emergency managers, community leaders and other government agencies only. You are encouraged to complete a [short survey](#) on iNWS. See the iNWS [Service Description Document](#) for more information.

VISN2 Hydro Point Created!



Interactive NWS My Alerts

- [Alerts Home](#)
- [Account Settings](#)
- [Logout](#)

iNWS Alert Areas

[+ Add New Alert Area](#)

[Reno-Tahoe](#)

[Reno](#)

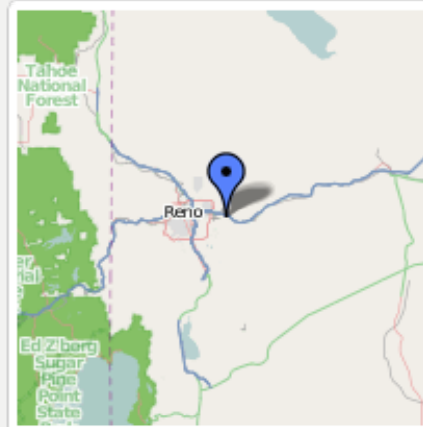
[ndot test with no Pyr](#)

[EM Example](#)

Hydrology Alert Points

[+ Add New Hydro Point](#)

[Truckee River at Vista \(VISN2\)](#)



VISN2

Truckee River at Vista

Created on July 7 2010 4:09 PM UTC

Active Alert Types:

Forecast Flood Stage Change

Settings

[Edit Alert Types](#)

[Delete Alert Area](#)

Recent Alerts for Truckee River at Vista

No more alerts have been issued since May 3 2010.

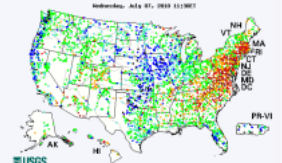
iNWS is an experimental service intended for NWS core partners, including emergency managers, community leaders and other government agencies only. You are encouraged to complete a [short survey](#) on iNWS. See the iNWS [Service Description Document](#) for more information.

View current and historical streamflow, groundwater level, and water-quality data

Data by state

Data Discovery
For more data options, explore our data discovery tools.

Today's Water Conditions
View maps of current and historical conditions



- ◆ Streamflow
- ◆ Flood and high flow
- ◆ Drought
- ◆ Groundwater levels
- ◆ Surface water quality

WATER SCIENCE SPECIALTIES

- ◆ Surface Water
- ◆ Groundwater
- ◆ Water Quality
- ◆ Water Use
- ◆ Research

WATER SCIENCE BY STATE

USGS Water Science Centers are located in each state

Select a State...

Real-time data from USGS gages are transmitted via satellite or other telemetry to USGS offices at various intervals; in most cases, once every 1 or 4 hours. Emergency transmissions, such as during floods, may be more frequent. *Notifications will be based on the data received at these site-dependent intervals.*

How to Subscribe

1. **Select the Site and Data Type** - Use the interactive map below to browse the network of USGS real-time sites in one or more contiguous states or territories by data type. If you already know a site by its number or partial name within your current selection, you may map it directly by entering it in the "Search this selection" field. Use the zoom tools in the upper left of the map to focus on your area of interest. On the map, click on the site's marker for which you would like to get notifications, then click "Subscribe". Each notification subscription must be submitted separately. You must allow pop-up windows from this site.
2. **Submit Your Subscription Form** - Choose to receive the notifications at either your email address or text-enabled (SMS) mobile phone. Select your desired notification settings; i.e. data type, threshold condition, and frequency.
3. **Confirm your Subscription** - Shortly after you submit your form, a message containing your transaction ID will be sent to the email address you specified. *You must reply to this email message, without altering it, in order to confirm and activate your subscription.*

IMPORTANT:

- Before you subscribe, please read the [Provisional Data Statement](#) and [Disclaimer](#).
- About subscriptions:
 - All subscriptions, including text messaging, must be confirmed by return email before they can be activated (details given when you subscribe).
 - A subscription is for one data-type parameter and threshold condition per site. You may subscribe to multiple parameters at a single site.
 - Threshold settings can be changed by submitting a subscription for the same site and data parameter.

SITE SELECTION

State or Territory
(select one or more)

Maryland
Massachusetts
Michigan
Minnesota
Mississippi
Missouri
Montana
Nebraska
Nevada
New Hampshire


Data Type

- ▲ Surface Water
- Groundwater
- ▼ Water Quality
- Precipitation



USGS WaterAlert Subscription Form - Google Chrome

http://water.usgs.gov/wateralert/subscribe.html?site_no=10350000&agency_cd=USGS&site_nm=TRUCKEE%20RV%20AT%20VISTA,%20NV8



USGS Home
Contact USGS
Search USGS

USGS WaterAlert Subscription Form

[Ver: 0.1.3-beta]

Site Number: 10350000
 Site Name: TRUCKEE RV AT VISTA, NV
 Agency: USGS
 Transaction ID: YgG2C

Send Notification To: [about this...](#)

My email address
 My mobile phone

10-digit phone number: [] -my carrier- [v]
 email address+: []

Notification Frequency: [about this...](#)

Hourly
 Daily

Streamflow Parameter: [about this...](#) Recent value:

Discharge (cfs) 642
 Gage height (ft) 5.11 (NWS flood stage = 15)

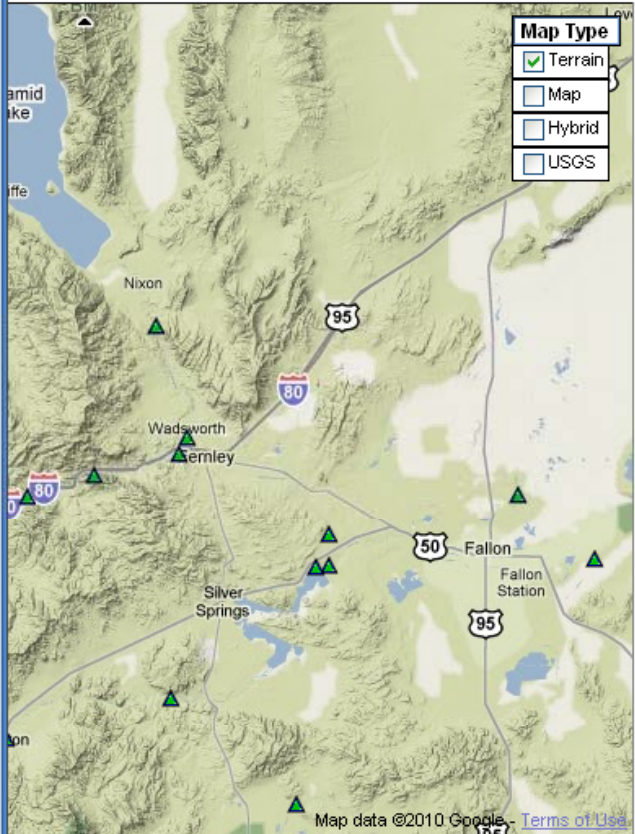
Threshold Condition: [about this...](#)

Greater than (>)
 Less than (<)
 Outside a range (< or >)
 Inside a range (> and <)

Real-time value is greater than: ft

I have read and acknowledge the [Provisional Data Statement](#) and [Disclaimer](#).

+Email address is required for a one-time confirmation. Shortly after you submit this form, you will receive an email to which you must reply, without altering, in order to activate this SMS subscription.



...by return email before they can be activated (details give condition per site. You may subscribe to multiple parameters for the same site and data parameter.

a USGS gaging site via email, cell phone text message, or ... you will get a reply showing the current river stage and s...



revchat

Conversation Options Send To

revchat

4 people in room

- nwsbot
- nws-reno-rhett.milne
- nwsrev-edan.lindaman
- nws-sto-kathy

(2:53:42 PM) nws-hnx-HNX084 [*nws-carlos.molina@nwschat.weather.gov/Home*] entered the room.

(2:53:42 PM) nws-jim.purpura [*nws-jim.purpura@nwschat.weather.gov/Home*] entered the room.

(2:53:42 PM) nws-sto-kathy [*nws-kathryn.hoxsie@nwschat.weather.gov/Home*] entered the room.

(2:53:42 PM) nws-katherine.labelle [*nws-katherine.labelle@nwschat.weather.gov/Home*] entered the room.

(2:53:42 PM) nws-reno-rhett.milne [*nws-rhett.milne@nwschat.weather.gov/Home*] entered the room.

(10/24/2010 8:28:24 PM) nwsbot: REV expires [Areal Flood Warning](#) for Alpine, El Dorado, Nevada, Placer [CA] and Carson City, Douglas, Washoe [NV]

(10/24/2010 9:11:13 PM) nwsbot: REV expires [Areal Flood Advisory](#) for Alpine, El Dorado, Lassen, Nevada, Placer, Plumas, Sierra [CA]

(10/24/2010 9:12:16 PM) nwsbot: REV expires [Areal Flood Advisory](#) for El Dorado, Lassen, Nevada, Placer, Plumas, Sierra [CA] and Carson City, Douglas, Washoe [NV]

(10/24/2010 10:12:31 PM) nwsbot: REV: 5 Wsw Prosser Creek Res [Nevada Co, CA] trained spotter reports [HEAVY RAIN of E2.84 INCH](#) at 08:02 PM PDT -- past 12 hour rainfall total.

(10/24/2010 10:12:31 PM) nwsbot: REV: Mammoth Lakes [Mono Co, CA] public reports [HEAVY RAIN of E1.63 INCH](#) at 08:02 PM PDT -- storm total precipitation, since midnight 1.49 inches.

(10/24/2010 10:12:31 PM) nwsbot: REV: 3 Nw Carson City [Carson City Co, NV] trained spotter reports [HEAVY RAIN of E2.57 INCH](#) at 08:02 PM PDT -- 24 hour rainfall total.

(10/24/2010 10:12:32 PM) nwsbot: REV: 4 Wsw Reno [Washoe Co, NV] trained spotter reports [HEAVY RAIN of M2.50 INCH](#) at 09:13 PM PDT -- 2.5 inches rainfall in last 24 hours. montreux area near mt rose highway.

(10/24/2010 10:51:09 PM) nwsbot: REV expires [High Wind Warning](#) for Greater Reno-Carson City-Minden Area, Western Nevada Basin and Range including Pyramid Lake [NV]

(10/24/2010 10:51:09 PM) nwsbot: REV expires [Wind Advisory](#) for Greater Lake Tahoe Area [CA] and Greater Lake Tahoe Area [NV]

(10/24/2010 10:51:09 PM) nwsbot: REV continues [High Wind Warning](#) for Mono [CA] till Oct 25, 5:00 AM PDT

(10/24/2010 10:51:09 PM) nwsbot: REV continues [Wind Advisory](#) for Mineral and Southern Lyon Counties [NV] till Oct 25, 5:00 AM PDT

(10/24/2010 11:06:57 PM) nwsbot: REV issues [Area Forecast Discussion \(AFD\)](#)

(10/25/2010 12:36:08 AM) nwsbot: MAMMOTH/JUNE LAKES,CA (MMH) ASOS reports gust of 58.0 knots from WSW @ 0729Z KMMH 250729Z AUTO 25046G58KT 10SM SCT021 BKN042 OVC049 11/03 A2985

Font + Insert Smile! Attention!



NOAA's National Weather Service NWSChat

Search NWS All NOAA Go



[NWSChat Home](#) [Reset Password](#) [Documentation/Help](#) [Contacts](#) [Online Tools](#) [NWS Toolbox](#)

VTEC Options

Help RADAR Map Text Data **Google Map** SBW History Storm Reports within SBW All Storm Reports Geography Included List Events

Issuing Office:

RENO

Phenomena:

Areal Flood

Significance:

Warning

Event Number:

0002

Year:

2010

Event Timeline:



Update Page

LSR KML Source

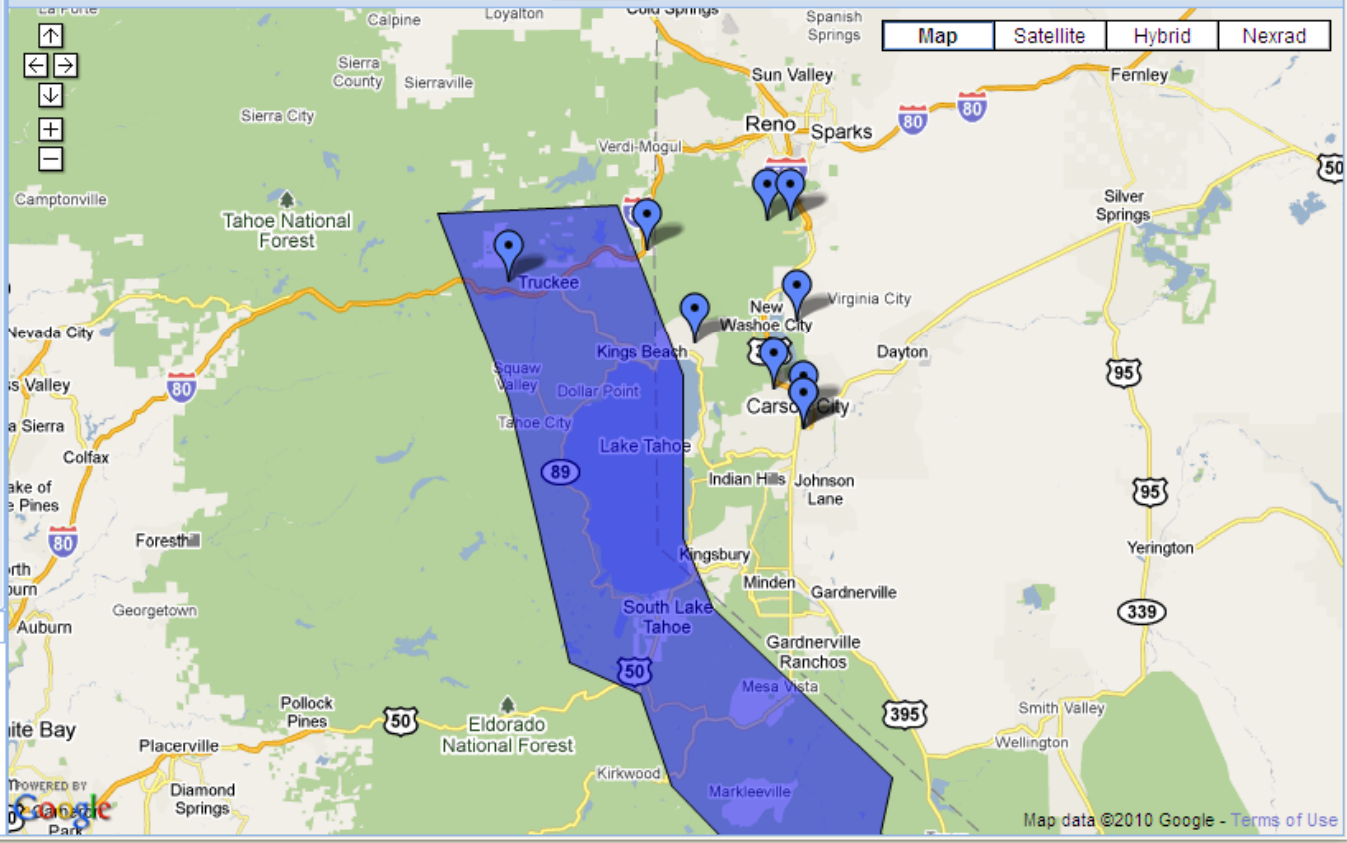
Warning KML Source

County Intersection KML

[Map Disclaimer](#)

RENO Areal Flood Warning #0002 issued 2010-10-25 00:47Z expires 2010-10-25 03:30Z

Hide Storm Reports Show County Intersection NEXRAD Opacity 1



Map data ©2010 Google - Terms of Use

Done



VTEC Options

Help | [RADAR Map](#) | **Text Data** | [Google Map](#) | [SBW History](#) | [Storm Reports within SBW](#) | [All Storm Reports](#) | [Geography Included](#) | [List Events](#)

Issuing Office:

RENO

Phenomena:

Areal Flood

Significance:

Warning

Event Number:

0002

Year:

2010

Event Timeline:

[Update Page](#)

[LSR KML Source](#)

[Warning KML Source](#)

[County Intersection KML](#)

[Map Disclaimer](#)

RENO Areal Flood Warning #0002 issued 2010-10-25 00:47Z expires 2010-10-25 03:30Z

Issuance **Update 1**

Print Text

000
WGUS85 KREV 250328
FLSREV

FLOOD STATEMENT
NATIONAL WEATHER SERVICE RENO NV
828 PM PDT SUN OCT 24 2010

CAC003-017-057-061-NVC005-031-510-250335-
/O.EXP.KREV.FA.W.0002.000000T0000Z-101025T0330Z/
/00000.0.UU.000000T0000Z.000000T0000Z.000000T0000Z.OO/
NEVADA CA-PLACER CA-ALPINE CA-EL DORADO CA-WASHOE NV-DOUGLAS NV-
CARSON CITY NV-
828 PM PDT SUN OCT 24 2010

...THE FLOOD WARNING WILL EXPIRE AT 830 PM PDT FOR URBAN AREAS AND
SMALL STREAMS IN EXTREME WEST CENTRAL CARSON CITY...EXTREME
NORTHWESTERN DOUGLAS...EXTREME SOUTHWESTERN WASHOE...NORTHEASTERN EL
DORADO...ALPINE...NORTHEASTERN PLACER AND NORTHEASTERN NEVADA
COUNTIES...

AT 820 PM PDT HEAVY RAIN WAS CHANGING TO SCATTERED SHOWERS AND WILL
BRING AN END TO THE FLOODING OF SMALL CREEKS AND STREAMS. SEVERAL
CREEKS AND STREAMS REMAIN NEAR BANKFULL IN WESTERN NEVADA AND
EASTERN CALIFORNIA AND WILL DO SO FOR THE NEXT FEW HOURS BEFORE
GRADUALLY RECEDING.



https://nwschat.weather.gov/vtec/#2010-O-NEW-KREV-FF-W-0001

- Customize Links
- Free Hotmail
- Windows Marketplace
- Windows Media
- Windows

VTEC Options

Issuing Office:
 RENO

Phenomena:
 Flash Flood

Significance:
 Warning

Event Number:
 0001

Year:
 2010

Event Timeline:

Update Page

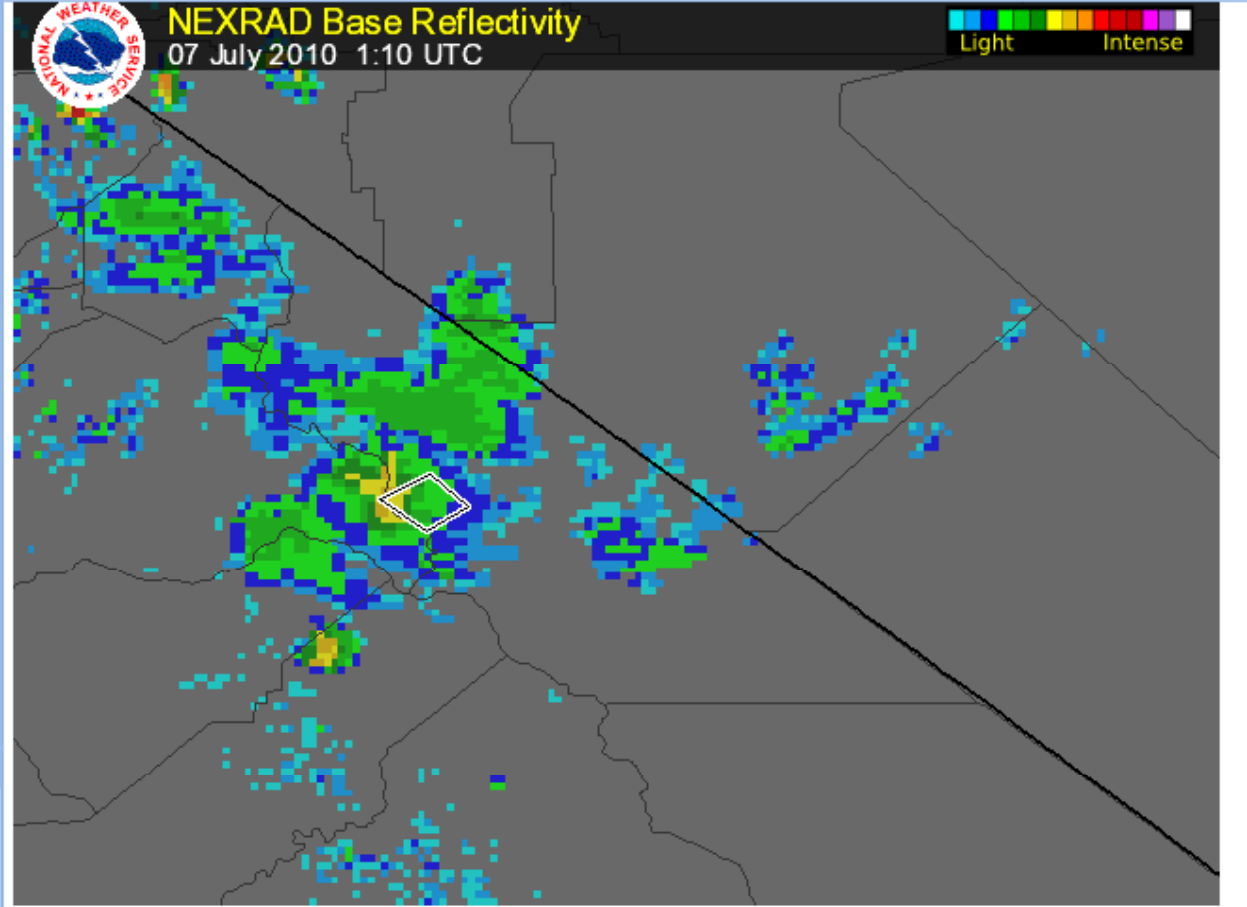
LSR KML Source

Warning KML Source

County Intersection KML

Help **RADAR Map** Text Data Google Map SBW History Storm Reports within SBW All Storm Reports Geograp

RENO Flash Flood Warning #0001 issued 2010-07-07 01:09Z expires 2010-07-07 02:00Z



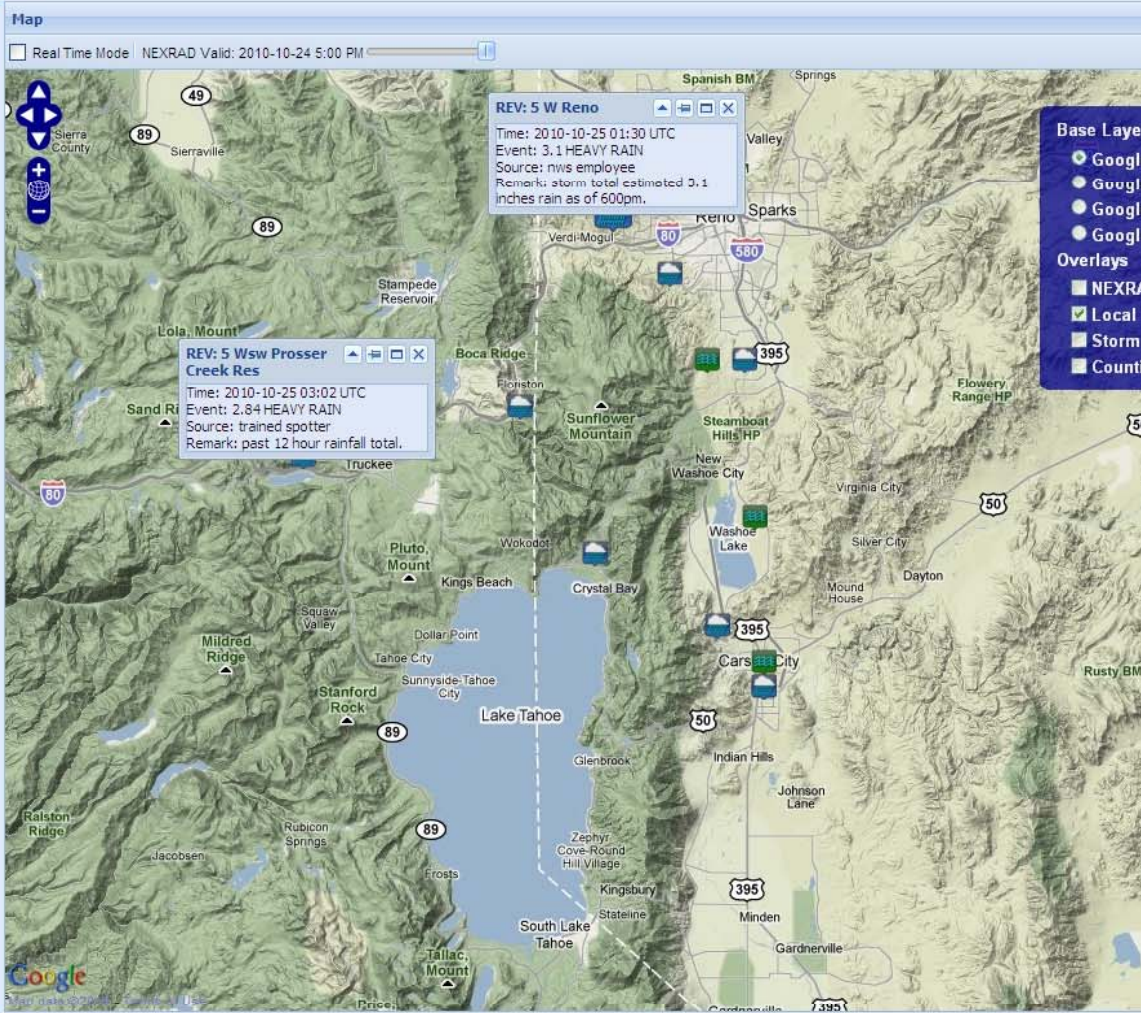
[Map Disclaimer](#)

Event Time Slider

REV x Start 24 Oct 2010 5:27 PM End 24 Oct 2010 8:27 PM Load

Help Local Storm Report Information Storm Based Warnings

Office	Report Time	County	Location	ST	Event Type	Mag.
REV	2010-10-24 5:50 PM	Washoe	8 S Reno	NV	FLOOD	0
REV	2010-10-24 6:28 PM	Carson City	2 Sse Carson City	NV	HEAVY RAIN	1.24
REV	2010-10-24 6:30 PM	Washoe	5 W Reno	NV	HEAVY RAIN	3.1
REV	2010-10-24 6:59 PM	Washoe	6 S Reno	NV	HEAVY RAIN	1.22
REV	2010-10-24 7:00 PM	Carson City	Carson City	NV	FLOOD	0
REV	2010-10-24 7:01 PM	Nevada	15 Sw Reno	CA	HEAVY RAIN	3.66
REV	2010-10-24 7:05 PM	Washoe	5 N Reno	NV	HEAVY RAIN	0.51
REV	2010-10-24 7:17 PM	Washoe	1 S New Washoe ...	NV	FLOOD	0
REV	2010-10-24 7:23 PM	Washoe	4 Ssw Reno	NV	HEAVY RAIN	2.63
REV	2010-10-24 7:30 PM	Washoe	1 Ne Incline Village	NV	HEAVY RAIN	2.5
REV	2010-10-24 8:02 PM	Carson City	3 Nw Carson City	NV	HEAVY RAIN	2.57
REV	2010-10-24 8:02 PM	Mono	Mammoth Lakes	CA	HEAVY RAIN	1.63
REV	2010-10-24 8:02 PM	Nevada	5 Wsw Prosser C...	CA	HEAVY RAIN	2.84
REV	2010-10-24 8:27 PM	Carson City	2 Sse Carson City	NV	HEAVY RAIN	1.5
REV	2010-10-24 8:27 PM	Lassen	4 Ssw Susanville	CA	HEAVY RAIN	2.42
REV	2010-10-24 8:27 PM	Plumas	Portola	CA	HEAVY RAIN	1.53





Questions?

[weather.gov](https://www.weather.gov)

NOAA National Weather Service